



Provided by the author(s) and University of Galway in accordance with publisher policies. Please cite the published version when available.

Title	Consequences of varied soil hydraulic and meteorological complexity on unsaturated zone time lag estimates.
Author(s)	Vero, S.E.; Healy, Mark G.
Publication Date	2014-10-13
Publication Information	Vero, S.E., Ibrahim, T.G., Creamer, R.E., Grant, J., Healy, M.G., Henry, T., Kramers, G., Richards, K.G., Fenton, O. 2014. Consequences of varied soil hydraulic and meteorological complexity on unsaturated zone time lag estimates. Journal of Contaminant Hydrology 170: 53- 67.
Publisher	Elsevier
Link to publisher's version	http://dx.doi.org/10.1016/j.jconhyd.2014.10.002
Item record	http://hdl.handle.net/10379/4670
DOI	http://dx.doi.org/10.1016/j.jconhyd.2014.10.002

Downloaded 2024-03-20T09:11:24Z

Some rights reserved. For more information, please see the item record link above.



Published as: Vero, S.E., Ibrahim, T.G., Creamer, R.E., Grant, J., Healy, M.G., Henry, T., Kramers, G., Richards, K.G., Fenton, O. 2014. Consequences of varied soil hydraulic and meteorological complexity on unsaturated zone time lag estimates. Journal of Contaminant Hydrology 170: 53- 67.

Consequences of varied soil hydraulic and meteorological complexity on unsaturated zone time lag estimates

S. E. Vero^{a,b*}, T. G. Ibrahim^c, R. E. Creamer^a, J. Grant^d, M. G. Healy^b, T. Henry^e, G. Kramers^{a,f}, K. G. Richards^a, and O. Fenton^a

^a*Crops, Environment and Land Use Program, Teagasc, Johnstown Castle, Co. Wexford, Ireland*

^b*Civil Engineering, National University of Ireland Galway, Co. Galway, Ireland*

^c*Sustainable Land and Soils, Department for Environment, Food and Rural Affairs, London, United Kingdom*

^d*Teagasc Research Operations Group, Statistics and Applied Physics Department, Ashtown, Dublin 15, Ireland*

^e*Earth and Ocean Sciences, National University of Ireland Galway, Co. Galway, Ireland*

^f*School of Biosystems Engineering, College of Engineering and Architecture, University College Dublin, Co. Dublin, Ireland*

*
Corresponding author: Tel.: +353 0877576641 E-mail address: sara.vero@teagasc.ie (S.Vero).

ABSTRACT

The true efficacy of a programme of agricultural mitigation measures within a catchment to improve water quality can be determined only after a certain hydrologic time lag period (subsequent to implementation) has elapsed. As the biophysical response to policy is not synchronous, accurate estimates of total time lag (unsaturated and saturated) become critical to manage the expectations of policy makers. The estimation of the vertical unsaturated zone component of time lag is vital as it indicates early trends (initial breakthrough), bulk (centre of mass) and total (Exit) travel times. Typically, estimation of time lag through the unsaturated zone is poor, due to the lack of site specific soil physical data, or by assuming saturated conditions. Numerical models (e.g. Hydrus 1D) enable estimates of time lag with varied levels of input data. The current study examines the

consequences of varied soil hydraulic and meteorological complexity on unsaturated zone time lag estimates using simulated and actual soil profiles. Results indicated that: greater temporal resolution (from daily to hourly) of meteorological data was more critical as the saturated hydraulic conductivity of the soil decreased; high clay content soils failed to converge reflecting prevalence of lateral component as a contaminant pathway; elucidation of soil hydraulic properties was influenced by the complexity of soil physical data employed (textural menu, ROSETTA, full and partial soil water characteristic curves), which consequently affected time lag ranges; as the importance of the unsaturated zone increases with respect to total travel times the requirements for high complexity/resolution input data become greater. The methodology presented herein demonstrates that decisions made regarding input data and landscape position will have consequences for the estimated range of vertical travel times. Insufficiencies or inaccuracies regarding such input data can therefore mislead policy makers regarding the achievability of water quality targets.

Keywords: Time lag, Hydrus, Water Quality, Unsaturated.

1. Introduction

The European Union Water Framework Directive (EU-WFD) (European Commission (EC), 2000) was enacted in December 2000. Its objective is to attain ‘good’ status for all surface and groundwater bodies by 2015, with the possibility to extend deadlines to the second reporting period in 2021 or beyond. The EU-WFD is enforced in member states through programmes of measures (POM) e.g. the Nitrates Directive in Ireland (EC, 1991), which aims to prevent water pollution by managing the use of fertiliser, manure and increasing nitrogen use efficiency (van Grinsven *et al.*, 2012). In Ireland, the Agricultural

Catchments Program (ACP) evaluates the environmental and economic effects of POM implemented under the Nitrates Directive (ACP, 2013). Despite prompt implementation of POMs throughout the EU in 2012, many catchments may not achieve good water quality status within the given timeframe, due to the time lag of nutrient transport from source to receptor via surface and subsurface hydrologic pathways. An appraisal of catchment time lag issues may offer a more realistic, scientifically-based timescale for expected water quality improvements in response to mitigation measures (Jordan *et al.*, 2005; Fenton *et al.*, 2011).

1.1 Time lag

Time lag (t_T), also referred to as time delay, retardation factor, residence time, or memory effect (Cook *et al.*, 2003; Bechmann *et al.*, 2008; Fenton *et al.*, 2011), is defined in this paper as the inherent hydrologic delay in response to mitigation measures. It is often conceptualised as consisting of both a vertical component through the unsaturated zone (t_u) and a lateral component via the saturated zone (t_s) (Sophocleous, 2004). It is acknowledged that the unsaturated zone also will inevitably contain a lateral component (Forrer *et al.* 1999), but for the purposes of this study t_u is assumed to represent vertical transport through the unsaturated zone alone. Furthermore the soil profiles used herein represent profiles in which this pathway prevails.

There is also evidence of time lag at larger national scales e.g. Granlund *et al.*, 2005 (Finland); Kronvang *et al.*, 2008 (Denmark); van Grinsven *et al.*, 2013 (EU). Fenton *et al.* (2011), using saturated assumptions to various depths (maximum 10 m), demonstrated that t_T is likely to inhibit the capacity of many Irish catchments to achieve WFD targets within the designated reporting periods, and consequently, deadlines have been extended (Daly, 2011).

However, site specific analyses incorporating variably saturated solute transport parameters would better account for the national diversity of soil and landscape conditions. Although it is often purported as a “generic excuse” (Scheure and Naus, 2010) to overcome more stringent policy measures, elucidation of time lag is fundamental in order to better predict the response of water bodies to a change in agricultural management practices (Meals *et al.*, 2010; Mellander *et al.*, 2012). In addition, catchments with lowest time lags (high vulnerability) display a rapid response to POMs (e.g. free draining soils underlain by high permeability karst bedrock (Hübsch *et al.*, 2013) and offer an opportunity to test such POMs within specified reporting periods. Conversely, catchments with longer time lags (e.g. due to lower soil and aquifer permeability (Wang *et al.* 2012)), display slower responses limiting the potential to assess POM efficacy within the same reporting periods.

Numerous studies have highlighted the crucial role of the unsaturated zone within the hydrologic cycle, and the need for realistic quantification of t_u within hydrological models (Torres *et al.*, 1998, Vereecken *et al.*, 2008, Hooper, 2009). Sousa *et al.* (2013) described a methodology to assess the importance of t_u within the context of t_T (the sum of unsaturated and saturated time lag: $t_T = t_u + t_s$) and advocated the use of measured rather than generic data collection to more accurately account for t_T . Whilst it is typical within a catchment study for more investment and information to be readily available on t_s little thought is often given to estimating t_u , despite the influence it exerts on solute transport timelines.

The focus of this paper is t_u , which is mainly controlled by soil/subsoil/bedrock type (Bejat *et al.*, 2000; Helliwell, 2011), unsaturated thickness (Hillel, 2004), its variably saturated nature (Nielsen *et al.*, 1986), interactions between the solute and the soil matrix

(Leij and van Genuchten, 2011) and climatic factors (Diamond and Shanley, 2003; Stark and Richards, 2008). In addition, the spatial (Peck *et al.*, 1977; Gumiere *et al.*, 2013) and temporal variability (Mapa *et al.*, 1986; Sousa *et al.*, 2013) of weather and soil data and the proximity of a particular landscape position relative to ground and surface water receptors (Jordan *et al.*, 2005; Schulte *et al.*, 2006; Fenton *et al.*, 2008; Fenton *et al.*, 2011; Sousa *et al.*, 2013) are significant when determining the importance of t_u . Numerous studies (Foussereau *et al.*, 2001; Baily *et al.*, 2011; Fenton *et al.*, 2011; Gladnyeva and Saifadeen, 2013; Huebsch *et al.*, 2013; Premrov *et al.*, 2014) have identified the critical influence exerted by meteorological patterns on t_u . Direct recharge (sometimes called effective drainage – Fenton *et al.* (2011)) to groundwater (and hence contaminant transport and t_u) is implicitly linked with rainfall amount and soil/subsoil/bedrock permeability (Fitzsimons and Misstear *et al.*, 2006).

1.2 Theoretical Framework

1.2.1 Unsaturated Zone Numerical Modelling

Accounting for vertical transport presents a challenge due to the nonlinearity of unsaturated flow (Russo, 1991). A simple approach is to assume constant saturation (Fenton *et al.*, 2011) (Eq.1). However, this is likely to underestimate t_u , as it fails to reflect the variably saturated nature of field conditions.

$$t_u = \frac{d}{ER/(n_e/100)} \quad (1)$$

where d (m) is depth of the soil profile, ER (m) is effective rainfall calculated after Schulte *et al.* (2005), and n_e is effective porosity (%). Fenton *et al.* (2011) demonstrated that for Ireland, t_T would exceed current EU-WFD reporting periods and, moreover, in some cases, t_u alone

would be outside such periods. Sousa *et al.* (2013) represented the % of travel time spent in the unsaturated zone (t_r) within the context of t_T (Eq. 2).

$$t_r = \frac{t_u}{t_T} \quad (2)$$

In recent years, numerical models (free-licence and proprietary) capable of describing transport in the unsaturated zone have been developed (see reviews by Arheimer and Olsson, 2003, Jackson *et al.*, 2006 and Sousa *et al.* 2013). These models incorporate the Richards' equation for unsaturated flow and so better reflect field conditions than the saturated approach. Model selection must be based not only upon which best describes the process/problem in question, but also upon the data available and accuracy required (Wagener *et al.* 2001, Konikow, 2011). Models may simulate conservative solutes or include more complex solute transformation equations, such as in the UNSATCHEM module incorporated in the Hydrus series (Šimůnek *et al.*, 1996).

Utilising such numeric models with the correct assumptions and boundary conditions (Vereecken *et al.*, 2008), in conjunction with generic or measured soil physical characteristics and weather data as inputs (Keim *et al.*, 2012; Sousa *et al.*, 2013) (Fig. 1), can be an alternative to field tracer studies. Indeed, the latter allow for assessing the true t_u , but frequently are too labour intensive and costly to be conducted across large areas or across a variety of hydrologic conditions. Konikow (2011) noted that in addition to the financial demands of tracer tests, they may also have limited predictive capacity compared to numerical simulations. While assessing solute transport via these models is not new (Pang *et al.*, 2000; Molénat and Gascuel-Odoux, 2002; Amin *et al.*, 2014 and many others), limited consideration has been given to the effects of input data complexity and resolution on model outputs.

1.2.2 Meteorological data inputs

Modelling unsaturated zone processes based on atmospheric conditions requires meteorological inputs (precipitation, temperature, humidity, wind and radiation) to be supplied (Šimůnek *et al.*, 2013). These determine the driving factors behind solute movement i.e. pressure head (h) (cm) and volumetric water content (θ) (%) (Shipitalo *et al.*, 2000). Studies have suggested that smaller time steps/greater resolution will result in more realistic simulations of water contents and pressure heads, and consequently may better account for solute movement (Wang *et al.*, 2009; Konikow, 2011; Keim *et al.*, 2012; Gladnyeva and Saifadeen, 2013).

1.2.3 Soil physical data inputs

Elucidation of soil-specific physical data (e.g. bulk density (B_D), texture, pore size distribution) in the field or in the laboratory, or any knowledge of such properties from the literature, enables the soil hydraulic properties (residual water content (θ_r), saturated water content (θ_s), and empirical parameters (m , n and α) and saturated hydraulic conductivity (k_s)) to be inferred from the soil water characteristic curve (SWCC) using a fitting equation (e.g. van Genuchten-Mualem (VGM) (1980), Brooks-Corey (1964), Kosugi (1996), or Durner (1994)). Options (ranked from low to high complexity) used to determine the hydraulic properties are: pedotransfer functions (PTF) such as the integrated soil catalogue (Carsel and Parrish, 1988) or Rosetta (Schaap *et al.*, 2001), computational processes such as integrated particle swarm optimisation (IPSO) (Yang and You, 2013), or actual SWCC construction (0 to -15 bar). All methods barring those employing actual SWCC infer hydraulic properties from known physical characteristics using fitting equations trained on extensive soil databases (Vereecken *et al.*, 2010). The hydraulic parameters obtained through these various methods are used as inputs to numerical models.

Konikow (2011) suggested that increasing the complexity of a numerical model can improve the accuracy of its outputs (e.g. solute transport and hence t_u), but at a cost of lowered ease of understanding and greater data demand. Similarly, increasing the complexity of data inputs to a model, such as by moving from pedotransfer functions to measured data, can likewise improve the performance of that model. Wösten *et al.* (1995) suggested that more complex soil data be employed only when the differences in estimates of soil behaviour were significant as a consequence. Mohamed and Ali (2006) found that using more detailed input data in PTFs increased their reliability. Several studies have noted failures of PTFs to wholly characterise the hydraulic behaviour of field soils (Schaap and Leij, 1998; Khodaverdiloo *et al.*, 2011). According to such studies, moving from PTFs to actual measurements of the SWCC is therefore likely to improve estimates of soil hydraulic parameters, and hence produce more satisfactory simulations of *in situ* water and solute movement using numerical models.

1.3 Hypotheses and objectives

This paper examines the range of estimated t_u when a certain meteorological dataset at a certain temporal resolution is combined with various levels of input data (generic to soil profile and horizon-specific) derived through fitting of the VGM equation. A numerical model simulating a tracer injection through the soil profile can then be used to estimate a breakthrough curve (divided here into initial breakthrough (IBT), peak concentration (Peak), centre of mass (COM) and total exit of the solute (Exit)) at the base of a soil profile. The combination of these presents a comprehensive description of time lag. IBT can indicate when trend analysis (which is mandatory for 2021 reporting), should be initiated as it

represents the initial contamination of the receptor after implementation of the POM. The COM equates most closely to saturated (Fenton *et al.*, 2011) condition equivalents and indicates the period in which the greatest impact of the POM on the receptor will be observed. Exit is also important, as it represents the maximum residence time of the solute in the profile, subsequent to which a POM can be considered to have taken full effect.

Such information is essential to robustly estimate t_T and is vital to manage the expectations of policymakers and stakeholders throughout the t_u period by determining when POMs will begin to affect a receptor and when water quality targets may be attained (Tedd *et al.*, 2014). Hydrus 1D (henceforth referred to as ‘Hydrus’), a popular free-licence model for simulating the unsaturated zone, was selected to estimate t_u . Hydrus is a one-dimensional model with the capacity to be upgraded to more complex 2- and 3-dimensional simulations where sufficient data are available, and which can be coupled with a groundwater model (e.g. MODFLOW) to enable t_T estimation. As indicated by Sousa *et al.* (2013), the importance of the unsaturated zone component in the overall t_T estimation depends on many factors such as t_s , landscape position, and proximity to a surface receptor or groundwater abstraction point.

The first hypothesis of this paper is that modelled t_u in freely drained soils are less sensitive to decreases in the temporal resolution of weather data than in more poorly drained soils. The sensitivity of various soil textures to changes in temporal resolution will be examined, and recommendations will be made regarding the most appropriate time-step to be employed in Hydrus for the purpose of estimating time lag. The second hypothesis is: increasing the level of complexity (generic to site-specific) employed to determine the soil hydraulic parameters using the VGM equation will add a higher degree of specificity to the soil hydraulic parameters and consequently improve t_u estimates. The final hypothesis is: t_T

will differ depending on landscape position, and this has consequences for the complexity of input data required. Therefore, the objectives were (a) to assess the sensitivity of various textural classes to changes in temporal resolution and make recommendations regarding the most appropriate time-step to be employed in Hydrus for the purpose of estimating t_u , (b) to assess the sensitivity of Hydrus to the complexity of soil input data and draw comparisons between the various complexity levels and (c) to use the Sousa *et al.* (2013) equation to assess the importance of data complexity in the unsaturated zone relative to various groundwater travel time scenarios; with t_r indicating the relative importance of t_u within the context of t_T .

2. Materials and Methods

2.1 Model simulations

Hydrus 1D V4.16 (Šimůnek *et al.*, 2013) was used for all model simulations to estimate vertical travel times of a conservative solute through homogenous and heterogeneous real-life soil profiles. Common to all simulations are the following: longitudinal dispersivity was set as the Hydrus default of $1/10^{\text{th}}$ of the profile depth (Fetter, 2008; Šimůnek *et al.*, 2013). Atmospheric boundary conditions with surface runoff and free drainage were imposed as the upper and lower boundary conditions, respectively (Jacques *et al.*, 2008). A third-type/Cauchy solute upper boundary condition was imposed (Konikow, 2011; Šimůnek *et al.*, 2013). A single-porosity, non-hysteretic VGM model was applied (van Genuchten *et al.*, 1991). The threshold concentration at which IBT and Exit were considered to have been achieved was $0.01 \text{ mmol cm}^{-1}$. Centre of mass (COM) was calculated according to Payne *et al.* (2008). Meteorological data (hourly) from a synoptic station (Moorepark, Co. Cork; $52^{\circ}09'50 \text{ N}$, $08^{\circ}15'50 \text{ W}$) was obtained and the Penman-Monteith equation (Monteith, 1981; Monteith and Unsworth, 1990; Smith *et al.*, 1991) was used to calculate evapotranspiration (Eta) based on measured precipitation, solar radiation, humidity and windspeed, and assuming an albedo of 0.23 (grassland). This station was selected on account of its long-term, complete dataset, and its proximity and comparable weather patterns (Keane and Sheridan, 2004) to the sites in question. To initiate solute movement through the profile, 10 mm of precipitation was applied on Day 1, with a solute concentration of 10 mmol cm^{-1} . Fig. 1 provides a conceptual model for the Hydrus simulations. In Fig. 1 the variable soil input parameters are indicated on the right-hand side and the model settings applied across all simulations are indicated on the left-hand side. Model inputs (meteorological and solute) and outputs at the base of the soil profile (IBT, Peak, COM and Exit) are also depicted.

For hypothesis 1, hourly versus daily meteorological data time-steps (converted using SAS V9.1 (SAS, 2003)) from 2004 (a wet year, 1038 mm rainfall) and 2010 (a dry year, 763 mm rainfall) (mean annual Irish rainfall ranges from 750 mm to >1200 mm (Keane and Sheridan, 2004)) were used in conjunction with homogeneous soil profiles, each of 0.5 m depth and each representing 12 textural classes (textural menu) and k_s (cm hr⁻¹) (Fig. 2). Such values were used as drainage class proxies, with lower permeability soils assumed to be more poorly drained than higher permeability soils (Gebhardt *et al.*, 2009). Bulk density (B_D) values for these textural classes were selected from the USDA soil quality test kit guide (USDA, 1999).

For hypothesis 2, transport through the unsaturated zone was simulated for 12 soil profiles surveyed as part of the Irish National Soil Survey (NSS) in the 1980's. The full dataset has been published by Diamond and Sills (2011). Table 1 presents abbreviated descriptions of these profiles. No field tracer experiments were conducted at these sites. However, the results of the present Hydrus simulations were compared with published values from a variety of lysimeter studies under similar meteorological conditions (e.g. Ryan *et al.*, 2001, Hooker *et al.*, 2005, Richards *et al.*, 2005 Kramers *et al.*, 2009/2012 – data presented in discussion herein, Selbie, 2013). The temporal resolution (2004-2008) of meteorological data was determined from the results of hypothesis 1. Simulations were conducted for each of the 12 NSS soil profiles using varying levels of soil physical characteristic data complexity to obtain the hydraulic parameters (Fig. 2). These were obtained via a range of simple to complex methods: textural class > ROSETTA > low pressure SWCC > full SWCC. The textural class parameters were selected from the Hydrus textural menu (Carsel and Parrish,

1988). ROSETTA was used to infer parameters based on sand, silt and clay percentages, and B_D (Diamond and Sills, 2011). The SWCC was fitted in RETC using the VGM equation, based on either the full curve (Diamond and Sills, 2011), or excluding the -15 bar pressure step (low pressure).

2.2 Landscape Position

For hypothesis 3, t_r was calculated according to Eq. 2 (Sousa *et al.* 2013). Exit was used to represent t_u for the purposes of estimating t_r ; next, each of the nine soil profiles were placed along a conceptualised catena (Anon. 2013) using their indicative soil groups from the NSS (Diamond and Sills, 2011). The transect ranges in soil group from podzol (typically higher up in the catena) to surface water and groundwater gleys (near a surface water receptor) (Anon. 2013). Saturated t_s values of 10, 5 and 0.5 years were used.

3. Results

3.1 Meteorological Data Resolution

Table 2 presents tracer breakthrough times (IBT, Peak, COM and Exit) for hourly versus daily meteorological inputs (wet and dry year equivalents), combined with hydraulic property characteristics, for the 12 homogenous soil textural classes in the Hydrus textural menu. Hydrus simulations were successful from sand to loam (29.70 to 1.04 cm hr⁻¹), with variable success for heavier textured soils (silt loam (0.45 cm hr⁻¹) to clay (0.20 cm hr⁻¹)). Sandy clay (0.12 cm hr⁻¹) to silty clay (0.02 cm hr⁻¹) consistently failed to converge. As k_s decreased, the model was less likely to converge, leading to failure <0.20 cm hr⁻¹ using a daily time-step and at <0.45 cm hr⁻¹ using an hourly time-step.

From sand to loam (better drained) regarding Exit: the temporal resolution of simulations (hourly and daily) produced similar results for both wet and dry year equivalents, with IBT <0.04 years. Irrespective of the soil textural range or wet/dry year simulation, the difference in IBT between hourly and daily simulations never exceeded 0.01 years. As expected, wet year IBT was quicker than the dry equivalent. Regarding Peak within the range of converging soil textures: differences between hourly and daily simulations ranged from 0-0.07 years. Average difference in Peak between hourly and daily simulations was 0.02 and 0.01 years for the wet and dry simulations, respectively. With the exception of the sand textural class (most freely drained), the differences between temporal simulations were greater for the wet year than for the dry year. For the soil textures which converged, greater differences between temporal resolutions were observed for COM, 0.02-0.28 years. The difference in COM between the temporal resolutions for both wet and dry years were as follows: sand (0.02 years for both wet and dry), loamy sand (0.03 wet and 0.06 dry), sandy loam (0.06 wet and 0.13 dry), sandy clay loam (0.15 wet and 0.20 dry), loam (0.16 wet and 0.23 dry). The difference in COM increases as k_s decreases and is typically greater for dry years. Regarding Exit: the differences between temporal simulations ranged from 0.10 to 0.42 years for the wet simulation, and from 0.16 to 0.47 years for the dry simulation. The difference in Exit between the temporal resolutions for both wet and dry years were as follows: sand (0.10 years wet and 0.16 dry), loamy sand (0.06 wet and 0.28 dry), sandy loam (0.39 wet and 0.39 dry), sandy clay loam (0.50 wet and >0.47 dry (full Exit not achieved)), loam (0.42 wet and >0.45 dry (full Exit not achieved)).

3.2 Soil Hydraulic Properties

For hypothesis 2 tables regarding the soil physical and hydraulic properties of all 12 NSS profiles are available as supplementary data. As a complete example, Tables 3 and 4 show the soil physical and hydraulic properties, respectively, for Profile No. **1** (Ballymacart). As the textural menu and ROSETTA options do not indicate the actual SWCC of the soil, but rather infer hydraulic properties using pedotransfer functions, no r^2 values are available to indicate how well the resulting VGM parameters describe the hydraulic properties of the specific soil in question. For both the full and low-pressure SWCCs, r^2 values were typically >0.9 , suggesting a very good fit of the curve for both datasets. For each individual horizon, the r^2 for the full SWCC was not consistently greater than that of the low-pressure SWCC. Differences were observed in all hydraulic parameters derived using the textural menu and those obtained by fitting the SWCC. The textural menu assigned values according to textural class. Residual water content and k_s , determined using the textural menu, typically diverged from values elucidated from the SWCC. In the case of Profile No. **1**, k_s was overestimated by 0.14 to 7.09 cm hr⁻¹, except for the EG horizons, in which it was underestimated by 2.75 to 3.54 cm hr⁻¹, while θ_r was consistently overestimated. ROSETTA and both SWCC options showed good θ_r agreement, but ROSETTA and the low-pressure SWCC diverged with respect to θ_s relative to the full SWCC. The α fitting parameter was considerably greater for the low-pressure than for the full SWCC. Changes to the fitting parameters allowed RETC to facilitate the fewer data points in the low-pressure SWCC relative to the full SWCC.

3.3 Solute Breakthrough

For hypothesis 2, Fig. 3 shows the standard deviation (SD) in IBT, Peak, COM and Exit for each of the nine converging NSS profiles, according to the level of data complexity. The overall trend was that SD increased from IBT to Exit. Exceptions to this were in Peak for

Profiles No. 4, 5 and (marginally) 8. Standard deviation in IBT for each profile depending on input data complexity were typically small; ranging between 0.005 and 0.1 years. Profile No. 1 (Fig. 4A) showed the greatest difference in IBT depending on data complexity, with low complexity data overestimating the rate of IBT relative to the SWCC estimates (SD 0.1 years). Profiles No. 1 and No. 6 showed the greatest SD as regards solute Exit.

Fig. 4 A-D shows IBT (A), Peak (B), COM (C) and Exit (D) for the nine converging NSS profiles. The bars indicate t_u in years determined according to the various data complexity levels. Three of the 12 NSS profiles simulated failed to converge for some or all of the input complexity levels and so have been excluded from the results. Specifically regarding IBT, the differences between each complexity level were typically minor (0.01-0.05 years) with the exception of Profile No. 1 (0.22 years). Peak concentration and COM were influenced by data complexity for most profiles (Fig. 4B and C). Differences in COM between the low pressure and full SWCC simulations were typically minor (SD 0.12 years), except for Profiles No. 1 (0.32 years) and No. 6 (0.24 years) (Fig. 3). There is a trend for underestimation of COM as data complexity is decreased relative to the SWCC simulations (Fig. 4C). Greater differences in COM are observed for the deeper and more layered profiles (e.g. Profile No. 1) than for the shallow, more homogeneous profiles (e.g. Profile No. 2 – SD of 0.03 years) (Fig. 3). The greatest SD amongst the four data complexity levels were found regarding solute Exit (i.e. 0.32 years, Fig. 3/ Fig. 4D). As with COM, there was a trend for underestimation of solute Exit when low complexity data were employed, compared to using SWCC data. Differences between full and low pressure SWCCs were greatest for Profile No. 1 (0.66 years), but relatively minor for all other profiles (<0.19 years, Fig. 4D). Estimates of Exit based on low complexity data underestimated those based on the full SWCC by between 0.28 and 0.97 years (Fig. 4D). Saturated equivalent t_u (Table 1) underestimated those based

on the full SWCC (Fig 4D) by 0.34 to 1.71 years. Underestimation was typically greater for deeper profiles (e.g. Profiles No. 1, 4 and 6).

3.4 Landscape Position

Based on the Sousa *et al.* (2013) equation, the t_r depending on data complexity using t_s of 0.5, 5 or 10 years is shown in Table 5. Shorter t_s led to greater t_r for all profiles. Increasing the input data complexity led to increases in calculated t_r . Using low complexity data, as opposed to the full SWCC, led to underestimation of t_r by up to 28%, 10% and 7% for t_s values of 0.5, 5 and 10 years, respectively. Only the shallow profiles (Profiles No. 2, 3 and 7) typically displayed t_r values <10%. Differences in t_r , depending on whether the full or low pressure SWCC was used, were typically minor (<6%). Fig. 5A shows the nine NSS profiles placed relative to a surface receptor on a conceptualised catena. The landscape position of Irish soil types is shown in Fig. 5B, with those NSS profiles simulated herein, highlighted. The t_r values shown represent the potential range of t_r calculated according to soil characteristic data complexity. As distance from the surface water receptor and t_s increased, there was a general trend towards decreasing t_r , despite increasing t_u (e.g. Profiles No. 1 and 6 versus 2). However, even at the maximum simulated distance from the receptor (t_s 10 years), t_r consistently exceeded 10%.

4. Discussion

4.1 Meteorological Data resolution

The failure of the model to converge when simulating low k_s soils indicates that hypothesis 1 can only be assessed in soils with less clay and silt contents i.e., more freely

drained soils with a more dominant vertical component, and furthermore, suggests that the model may not be ideally suited for the assessment of t_u in high clay content soils i.e. with imperfectly or poorly drained profiles. Such a limitation has been well documented in the literature (Chiu and Shackleford, 1998; Vereeken *et al.*, 2010). However, it is reasonable to assume that in such ‘heavy’ soils (which represent 32% of Irish agricultural soils; Humphreys *et al.*, 2008), or those soils possessing a low permeability layer at shallow depth (e.g. due to natural or anthropogenic reasons), mixed contaminant nutrient losses to a surface waterbody are more likely to occur through overland flow rather than sub-surface pathways (Kurz *et al.*, 2005 a/b; Doody *et al.*, 2006; Fleige and Horn, 2000; Ibrahim *et al.*, 2013). Within the range of converging textures (i.e. $>0.20 \text{ cm hr}^{-1}$) there is a greater need for higher temporal resolution of meteorological data, as the k_s of the soil profile (or of specific layers) decreases. This confirms hypothesis 1; that freely drained soils are less sensitive to the temporal resolution of meteorological data than poorly drained soils.

Critical for trend analysis is that temporal resolution is not vital when estimating IBT (differences <0.04 years) (Table 2), which means that a daily time step can be utilised. However, as COM is of primary interest with respect to testing the efficacy of POMs, the hourly time-step is most appropriate (Fenton *et al.* 2011). Mertens *et al.* (2002) found that increasing temporal resolution of weather data improved estimates of runoff obtained using Hydrus 1D. Similarly, Gladnyeva and Saifadeen (2013) found that lower temporal resolution led to errors in estimates of the COM of transported solutes both for hysteretic and non-hysteretic simulations. This is in agreement with the general hydrologic modelling recommendations of Konikow (2011). Furthermore, meteorology and rainfall intensity were shown to play a critical role in determining the rate and nature of solute movement and eventual recharge to groundwater and hence, should be accounted for in numerical models

(e.g. Torres *et al.*, 1998; Misstear, 2000; Pot *et al.*, 2005; Schulte *et al.*, 2006; Baily *et al.*, 2011; Keim *et al.*, 2012; Kramers *et al.*, 2012; Fenton *et al.*, 2013; Gladnyeva and Saifadeen 2013; Huebsch *et al.*, 2013; Jahangir *et al.*, 2013). By increasing time-step, the user essentially averages precipitation over a greater duration, which poorly reflects the intensity of the event and consequently results in errors in model outputs.

Hydrus has the capacity to accept meteorological inputs in the form of ‘time variable boundary conditions’ (TVBCs), in various time units. However, the graphical user interface (GUI) in Hydrus is limited to 10,000 TVBCs. Consequently, when hourly inputs are supplied, the simulation is limited to 10,000 hours (1.14 years). For many soil profiles, this is an insufficient length of time to wholly account for solute exit from the profile. Alternatives to overcome this limitation are: (a) to manually input additional TVBCs outside of the GUI, (b) to use a lower time resolution such as a daily time-step, or (c) to use the end conditions from the initial simulation as initial conditions for a subsequent simulation. In addition to the daily and hourly temporal resolutions and results presented here, simulations were conducted using 2, 4, 6 and 12-hr temporal discretisation (interim time-steps). However, the results of those simulations were not included as they became increasingly dissimilar to those obtained using daily or hourly time-steps as temporal resolution decreased, i.e. with the 2-hr discretisation being most similar and the 12-hr being most divergent. Whilst it may be tempting to simply reduce the temporal resolution of weather data, the authors found that this practice led to substantial discrepancies in parameter estimation. It is likely that these errors result from discrepancies between the time-steps over which the boundary conditions are imposed (Šimůnek, 2014). For scenarios where solute breakthrough is likely to exceed 10,000 TVBCs, instead of attempting to overcome the limitations of the GUI by decreasing the temporal resolution, input data is best supplied outside of the GUI. The failure of these interim time-

steps to produce satisfactory results is, in reality, unlikely to be a significant problem to model users, as meteorological data are typically available in daily or hourly resolutions.

The difference in solute Exit and COM between daily and hourly simulations (Table 1) suggests that hourly data may better simulate solute movement. While the difference in COM between simulations increased with decreasing k_s , this was not the case with Exit. As COM represents the bulk of solute movement, this result confirmed the hypothesis that sensitivity to temporal resolution is greater in more poorly drained soils. The failure of Exit to conform to this pattern may be as a result of the physical retardation of solute movement through areas of restricted flow (Kramers *et al.*, 2012; Kartha and Srivastava, 2008), as a result of low mobile water content (Padilla *et al.*, 1999; Konikow, 2011) or decreased porosity. However, the solute concentrations observed during the tailing period are extremely low and unlikely to contribute significantly to groundwater contamination. This of course must be tested further by incorporating data in future time lag analyses on nitrate transformational processes or phosphorus adsorption/desorption dynamics. The initiation of this tailing effect corresponded with the driest period of the year, in which differences in h between the hourly and daily simulations were greatest (up to 124 cm). The failure of Profiles No. 4, 5 and 8 to conform to the overall trend of increasing SD of COM relative to Peak (Fig. 3) is indicative of the limited extent of tailing present; with those profiles exhibiting greater tailing (e.g. Profile No. 1) also exhibiting a greater SD as regards COM relative to Peak.

Co-location of meteorological stations and collection of soil physical data are important, as the spatial variability of weather within/across catchments and indeed larger areas can be considerable (Mapa *et al.*, 1986, Sweeney, 1985). In addition, potential errors in site-specific values resulting from unequal distribution of synoptic recording stations can be problematic. In Ireland, synoptic recording stations are both limited in number and unequally distributed across the country, thus limiting the spatial accuracy of weather recording. This difficulty may be offset by supplying precipitation data from the c. 750 rainfall recording stations, which are well distributed. The evapotranspiration parameters, which exhibit lower spatial variability, can be interpolated from Met Éireann's (the Irish meteorological service) 25 synoptic stations. A digital elevation model, such as that described by Goodale *et al.* (1998), may aid in this. However, in vulnerable catchments, site-specific meteorological data, coupled with actual soil data, will help to elucidate more reliable ranges of t_u .

4.2 Soil Hydraulic Properties

Considerable differences were observed in the soil hydraulic properties determined via the textural menu, ROSETTA and the full and low-pressure SWCCs, respectively. Assuming that the full SWCC furnishes the most appropriate soil hydraulic properties to describe a specific soil, it is clear that using generic values, such as those obtained via the textural menu, can lead to significant errors, and may poorly reflect the properties and consequently processes of a specific soil. These values should at best be considered to give a rough indication of likely solute transport conditions, and may be adequate to estimate IBT (Table 4A). From policy makers' point of view, IBT (or trend) is vital as it indicates the initial response of a receptor to a POM and hence informs scientists when their monitoring network can begin to pick up the POM signal. As SD of this marker did not exceed 0.10 years

for any of the profiles herein, it seems imminently practical to accept low complexity, textural data as the preferred input variable. However, such low complexity data appears to be wholly insufficient when bulk effect of POM can be observed by the monitoring network. This is important as POM efficacy can only be assessed by analysing data collected during the COM period. Therefore, the correct identification of COM requires selecting more complex options as described herein (Fig. 2).

The textural menu method also leads to a homogenising effect on the hydraulic properties of the various horizons within a single profile, and hence may not wholly reflect changes in water and solute movement patterns as influenced by particle size distribution or B_D within a single textural class, e.g. horizons A1 and A2 of Profile No. 1 (Table 4). The ROSETTA method was more satisfactory, bearing closer resemblance to the SWCC results. For example, horizon A1 of Profile No. 1 displays θ_s values of 0.430, 0.452 and 0.559 according to the textural class, ROSETTA and SWCC methods respectively. Likewise, k_s values for that horizon were estimated as 1.04, 8.13 and 8.13 cm hr⁻¹ respectively, depending on input data complexity. Hence, the ROSETTA method can be assumed to more closely reflect hydraulic properties than textural class-based estimates. However, this method still represents a simplified description of the soil and, as resulting θ_s values diverged from those obtained using the SWCC, could lead to errors in water and solute transport calculation. Regarding the full and low-pressure SWCCs, reasonable similarity was observed between the two, and both presented high r^2 values (>0.90), suggesting a good fit of the SWCC using the VGM equation. By removing the -15 bar pressure point, the VGM equation maintained a good fit, but compensated by increasing the α parameter, e.g. from 0.001 to 1.070 in horizon A2 of Profile No. 1 (Table 4). In reality, measurement of the -15 bar pressure step is arduous,

slow and expensive. This step may be excluded when IBT, Peak and COM are of primary concern. This pressure step is only essential for estimation of total solute Exit (Fig. 4D).

4.3 Solute Breakthrough

4.3.1 Validity of Hydrus Simulations

The failure of three profiles to converge was related to the clay content and low k_s of their lower horizons. This corresponds to failures documented in Section 3.1. For these NSS soils, nutrient loss is unlikely to occur through the vertical pathway, with runoff, lateral transport and increased dispersion through the subsurface prevailing (Kurz *et al.*, 2005 a/b; Jarvis *et al.*, 2007; Blanco-Canqui and Lal, 2008; Kramers *et al.*, 2012). Consequently, Hydrus 1D is not the optimum model for the simulation of solute transport in these soils.

It must be acknowledged that the values of t_u presented here, regardless of input data complexity employed, do not represent the exact duration of solute movement through the profile. A model is only ‘a simplification of a very complex reality’ (Konikow, 2011). Due to the complexity and dynamic nature of contributing factors, time lag estimates can, at best, provide ranges in which response can be anticipated (Meals *et al.*, 2010). Furthermore, as the Richards equation upon which the Hydrus single-porosity model is based (Šimůnek *et al.*, 2013) neglects the occurrence of preferential flow, resulting estimates such not be assumed to preclude discrepancies in solute breakthrough, particularly as regards IBT, in structured soils. In such soils, more rapid solute movement may be observed as a consequence of preferential flow (Gerke, 2006, Kramers, 2009, Kramers *et al.*, 2012), in which case the application of a dual-porosity or permeability model within Hydrus may be more appropriate.

While measured breakthrough curves are not available for the NSS profiles described here, numerous studies under similar soil and meteorological conditions have demonstrated that the results obtained from the Hydrus simulations are likely to be realistic and within the ranges observed during unsaturated tracer and lysimeter experiments (Ryan *et al.* (2001), Hooker *et al.* (2005), Richards *et al.* (2005), Kramers *et al.* (2012), Selbie (2013)). In particular, the lysimeter study by Kramers *et al.* (2012) was conducted using soils which are closely comparable to those detailed herein.

Table 6 shows results (Peak, COM and Exit) from Kramers *et al.*, 2012 – presenting IBT and recovery using 1 m-deep lysimeter profiles (n=4). Lysimeters were exposed to an average yearly rainfall of 879 mm during that study. While direct comparison of the NSS profiles and those described by Kramers *et al.* (2012) cannot be drawn as they are essentially discrete sites, there are considerable physical resemblances between them, and both datasets originate from similar climatic and pedogenic environments. The Oak Park soil is roughly analogous to Profiles No. 2 and 3. The Clonroche and Elton soils resemble Profiles No. 5, 6 and 9. The poorly drained Rathangan soil is most similar to Profiles No. 1 and 8. Kramers *et al.* (2012) found IBT of <0.08 years for all profiles, which compares favourably with the Hydrus NSS simulations (est. IBT typically <0.09 years, except in the case of Profiles No. 1 and 7). Peak concentration in the NSS soils occurred on average between 0.30 and 0.50 years, which closely resembles peaks observed in the Oak Park and Clonroche soil in the lysimeter study. Peak occurrence for the Elton soil exceeded this for the spring application (0.85 years), but so too did the equivalent Profiles No. 6 and 9 with peak occurrence ranging between 0.58-0.84 and 0.57-0.77 years, respectively (depending on data complexity). Comparing Exit and COM for the Oak Park and Clonroche soils with the results of the data complexity trial suggests that the low complexity data likely underestimates these parameters, and that the

high complexity data may result in more realistic estimates. Total solute exit from the Clonroche soil was not achieved during the experimental timeframe of 1.14 years (Kramers, 2012); Exit from the equivalent NSS profiles likewise exceeded this duration regardless of data complexity. Due to the poor recovery of the Br^- tracer from the Elton and Rathangan soils, the COM and Exit values should not be considered to wholly reflect the total exit of solute from these profiles, which exceeded the experiment duration. Kramers (2012) observed a decrease in Br^- recovery as the drainage class of the soils decreased (Oak Park>Clonroche>Elton>Rathangan). There is a similarity between the failure to recover the tracer from this profile and the failure to converge of the three heavy NSS soils. This also reflects the slower Exit observed in the Hydrus simulations as clay content increased and k_s decreased. This gives further evidence to suggest that heavy clay soils are less at risk through the vertical as opposed to lateral pathways, and so their contribution to water contamination is likely to be insufficiently accounted for by one dimensional, vertical models. The results of the SWCC simulations more closely resembled the lysimeter results than those obtained using low complexity data, suggesting that measurements of the SWCC may result in more realistic simulations of actual soil profiles than are obtained via generic, pedotransfer functions. The low complexity data typically resulted in quicker Exit than was observed in comparable lysimeter studies.

4.3.2 Comparison of Simple to Complex Input Data

Regarding the Hydrus simulations of the NSS profiles, a general trend was observed in which underestimation of Exit and COM increased as data complexity decreased relative to the full SWCC simulations (Fig. 3, and Fig. 4C and D). Decreases in complexity resulted in underestimation of Exit by 0.28 to 0.97 years, and in COM by 0.02 to 0.36 years. These errors reflect the limited ability of low complexity data to describe the hydraulic behaviour of specific soils compared to measured values. Likewise, the general trend for increasing SD as

regards COM and Exit relative to IBT and Peak suggests that detailed soils data are more critical where estimation of these markers is intended (Fig. 3). Consequently, high quality, measured soil data are required to make site-specific estimates of time lag. Unsaturated estimates exceeded saturated estimates (Fenton *et al.*, 2011) from between 0.34 and 1.71 years. As these estimates performed more poorly in the deeper profiles (e.g. Profiles No. 1, 4 and 6), it should be considered that where the soil layer is thicker, unsaturated conditions are likely to play a greater role in determining solute transport (Sousa *et al.* 2013). The unsaturated simulations, while still representing a simplified conceptualisation of water and solute movement, suggest that generic soil characteristics and saturated assumptions vastly underestimate time lag, are likely to lead to unrealistic expectations regarding groundwater remediation timeframes.

The differences in Exit for the NSS profiles between data complexity levels were greatest for deeper soils displaying many horizons; e.g. Profile No. 1. Therefore, for very simple, shallow profiles high data complexity may be less critical. Likewise, where IBT of the solute is of primary interest, low complexity data may suffice. Sousa *et al.* (2013) noted that the importance of potential underestimation of t_u depends on ‘the context of other uncertainties, and of the potential cost of more detailed analyses, such as measuring the SWCC.

Differences in Exit between full and low pressure SWCC data inputs were typically small - on average 0.08 years. Only one profile (Profile No. 1) exhibited a large difference in Exit depending on the presence or omission of the -15 bar value from the SWCC (Fig. 4D). From a monitoring perspective, the signal is likely to be so low it will be difficult to connect

such concentrations with specific nutrient losses from the surface. This makes Exit interesting from a theoretical point of view, but in reality will not inform expectations of policy makers with respect to time lag and simply plays into the “generic excuse” category.

4.4 Landscape position

It is clear from Table 5 and Fig. 5A, that even when t_s is large, the unsaturated zone is always important, and so must typically be accounted for when assessing t_T . The effect of data complexity on t_r demonstrates that where t_s is shorter, such as when the unsaturated zone is underlain by karst geology (Drew, 2008), the use of high complexity data is more critical. Conversely, where t_s is slow, there may be grounds for a decrease in data complexity. Only the profiles with the most rapid t_u in conjunction with large t_s exhibited small t_r values. This suggests that t_u is of critical importance for most profiles, and so high quality data are recommended.

Based on Fig. 5A, it is clear that t_r is influenced not only by the properties of the unsaturated zone, but also landscape position. Hence, this factor should also be taken into account when surveying a site for the purpose of determining t_u , and this may inform the level of data complexity employed. For example, where a shallow profile is distant from the receptor, a decrease in data complexity, which would allow a judicious use of time and resources, may be beneficial. This is in accordance with Sousa *et al.* (2013), who suggested that there is no obvious threshold at which t_u becomes critical or negligible, but rather that the timescales involved, cost of additional data acquisition and importance of the receptor (from an abstraction or environmental point of view) should be considered. Consequently, decisions

regarding the optimum level of soil data complexity can only be made on a case-by-case basis. The greater context of the profiles simulated herein is demonstrated in Fig. 5B, which identifies the likely position of these profiles relative not only to a surface water receptor, but also to other common soil types. The NSS profiles (highlighted) are representative of those Irish soil types most likely to contribute to water contamination through the vertical dimension.

The small differences in t_r between the full and low pressure SWCC (<6 years) (Table 5) suggests that in many instances, it may not be necessary to measure the entire curve. The -15 bar pressure point is extremely time consuming and difficult to obtain using traditional methods such as pressure plates (Madsen *et al.*, 1986; Gee *et al.*, 2002; Cresswell *et al.*, 2008). The difficulty in measuring this point has contributed in part to the popularity of pedotransfer functions (Saxton *et al.*, 1986; Fredlund and Xing, 1994; Vereecken *et al.*, 2010), but as is shown here, this comes with a loss of site-specific accuracy. Measuring the SWCC excluding this point may present the optimum method of determining t_u . This will be further investigated as part of the current study.

5. Conclusions

For determining the potential impact of activities in a sensitive catchment, policy makers need to consider the type of data required to model the movement of water through the soils. Where initial (trend analysis) or peak breakthrough of a contaminant is the primary concern, use of a daily, rather than an hourly temporal resolution, is sufficient to describe contaminant transport. However, when determining the latter portion of the solute

breakthrough curve (centre of mass (bulk effect of measures) or the total exit of a contaminant from the profile), an hourly time-step is recommended. While higher quality soil physical data with respect to a specific soil profile, allows better estimation of soil hydraulic parameters, a reduction in data resolution as demonstrated herein may be sufficient in some circumstances for the attainment of reasonably accurate simulations of water and solute movement using numerical models. For example, when the importance of the unsaturated zone within the context of total time lag (unsaturated and saturated) to a receptor is minor, a reduction in the complexity of the soil physical data analysis may be justified. Data complexity is more critical where the source is closer to the receptor. The estimates of vertical time lag (< 3 years) through the unsaturated zones of 9 soil profiles in Ireland using Hydrus 1D were similar to the results of previous studies using tracers in similar soil types and meteorological conditions. This indicates the suitability of this modelling approach to such scenarios. Differences in vertical time lag estimated using the full soil water characteristic curve and those excluding the -15 bar values, which is difficult to measure in the laboratory, were typically small. Exclusion of this value may therefore be justified for this purpose in certain circumstances.

The methods described herein can facilitate future experimental design and elucidation of when (a) initial trends and (b) bulk effects of Programmes of Measures on water quality in vulnerable catchments occur.

Acknowledgements

The authors gratefully acknowledge the funding supplied for this project via the Teagasc Walsh Fellowship Scheme and National University of Ireland, Galway (NUIG). Special thanks also to Jirka Šimůnek for his helpful advice via the PC-Progress discussion

forum. Thanks also to the National Soil Survey of Ireland for supplying the Soils of Co. Waterford dataset. Thanks to Mark Moore for kindly allowing reprinting of Fig. 5B from the Teagasc Drainage Manual.

References

Agricultural Catchments Program. 2013. Phase 1 Report: 2008-2011. Teagasc, Johnstown Castle Environment Research Centre. pp110

Amin, M.G.M., Šimůnek, J. and Lægdsmand, M. 2014. Simulation of the redistribution and fate of contaminants from soil-injected animal slurry. *Agricultural Water Management*. 131: 17-29
Anon. 2013. Chapter 2: Soil and drainscapes. Creamer, R., Ibrahim, T. and Fenton, O. In: Teagasc Manual on Drainage and Soil Management. Ed. Moore, M., Fenton, O., Tuohy, P. and Ibrahim, T. Teagasc.

Arheimer, B. and Olsson, J. 2003. Integration and coupling of hydrological models with water quality models: Applications in Europe. Report of the Swedish Meteorological and Hydrological Institute, Norrköping Sweden. pp 49

Baily, A. Rock, L., Watson, C.J. and Fenton, O. 2011. Spatial and temporal variations in groundwater nitrate at an intensive dairy farm in south-east Ireland: insights from stable isotope data. *Agriculture, Ecosystems & Environment*. 144: 308-318

Bechmann, M., Deelstra, J., Stålnacke, P., Eggestad, H.O., Øygarden, L., Pengerud, A. 2008. Monitoring catchment scale agricultural pollution in Norway: policy instruments, implementation of mitigation methods and trends in nutrient and sediment losses. *Environmental Science & Policy*. 11: 102-114.

- Bejat, L., Perfect, E., Quisenberry, V.L., Coyne, M.S. and Hazler, G.R. 2000. Solute transport as related to soil structure in unsaturated intact soil blocks. *Soil Science Society of America Journal*. 64(3): 818-826
- Blanco-Canqui, H. and Lal, R. 2008. Principles of soil conservation and management. Springer. pp 617
- Brooks, R.H. and Corey, A.T. 1964. Hydraulic properties of porous media. Hydrology Papers. Colorado State University, fort Collins, Colorado.
- Carsel, R.F. and Parrish, R.S. 1988. Developing joint probability distributions of soil water retention characteristics. *Water Resources Research*. 24: 755-769
- Chiu, T-F, and Shackleford, C.D. 1998. Unsaturated hydraulic conductivity of compacted sand-kaolin mixtures. *Journal of Geotechnical and Geoenvironmental Engineering*. 124(2): 160-170
- Cook, P.G., Jolly, I.D., Walker, G.R. and Robinson, N.I. 2003. From drainage to recharge to discharge: some timelags in subsurface hydrology. In: Alsharhan, A.S., Wood, W.W. (Eds). *Water Resources Perspectives: Evaluation, Management and Policy*. Elsevier Science, Amsterdam, pp. 319-326
- Cresswell, H.P., Green, T.W. and McKenzie, N.J. 2008. The adequacy of pressure plate apparatus for determining soil water retention. *Soil Science Society of America Journal*. 72: 41-49
- Daly, D. 2011. Some implications of implementing the EU Water Framework Directive for developing agriculture – an EPA view. National Agrienvironment Conference 2011.

- Diamond, J. and Shanley, T. 2003. Infiltration rate assessment of some major soils. *Irish Geography*. 36(1): 32-46
- Diamond, J. and Sills, P. 2011. Soils of Co. Waterford. Soil Survey Bulletin No. 44. National Soil Survey of Ireland. Teagasc, Oakpark, Co. Carlow. pp314
- Doody, D., Moles, R., Tunney, H., Kurz, I., Bourke, D., Daly, K. and O'Regan, B. 2006. Impact of flow path length and flow rate on phosphorus loss in simulated overland flow from a humic gleysol grassland soil. *Science of the Total Environment*. 372: 247-255
- Drew, D.P. 2008. Hydrogeology of lowland karst in Ireland. *Quarterly Journal of Engineering, Geology and Hydrogeology*. 41: 61-72
- Durner, W. 1994. Hydraulic conductivity estimation for soils with heterogeneous pore structure. *Water Resources Research*. 30(2): 211-223
- European Commission, 1991. Council Directive (1991/676/EC). EC Directive of the European Parliament and of the Council of 12 December 1991 on the protection of waters against pollution caused by nitrates from agricultural sources. Brussels. pp 1-8
- European Commission, 2000. Council Directive (2000/60/EC). EC Directive of the European Parliament and of the Council 200/60/EC establishing a framework for community action in the field of water policy. Brussels. pp72
- Fenton, O., Healy, M.G. and Rogers, M. 2008. Preliminary steps in the location of a farm-scale groundwater remediation system. Proceedings of ESAI Environ 2007.
- Fenton, O., Schulte, R.P.O., Jordan, P., Lalor, S.T.J. and Richards, K.G. 2011. Time lag: A methodology for estimation of vertical and horizontal travel and flushing timescales to nitrate threshold concentrations in Irish aquifers. *Environmental Science and Policy*. 14(4): 419-431

- Fetter, C.W. 2008. Contaminant Hydrogeology 2nd Ed. Waveland Press Inc.
- Fitzsimons, V.P. and Misssteart, B.D.R. 2006. Estimating groundwater recharge through tills: a sensitivity analysis of soil moisture budgets and till properties in Ireland. *Hydrogeology Journal* 14: 548-561
- Fleige, H. and Horn, R. 2000. Field experiments on the effect of soil compaction on soil properties, runoff, interflow and erosion. *Advances in Geoecology*. 32: 258-268
- Forrer, I., Kasteel, R., Flury, M. and Flühler, H. 1999. Longitudinal and lateral dispersion in an unsaturated field soil. *Water Resources Research*. 35(10): 3049-3060
- Foussereau, X., Graham, W.D., Akpoji, G.A., Destouni, G. and Rao, P.S.C. 2001. Solute transport through a heterogeneous coupled vadose-saturated zone system with temporally random rainfall. *Water Resources Research*. 37(6): 1577-1588
- Fredlund, D.G. and Xing, A. 1994. Equations for the soil-water characteristic curve. *Canadian Geotechnical Journal*. 31: 521-532
- Gebhardt, S., Fliege, H. and Horn, R. 2009. Effect of compaction on pore functions of soils in a Saalean moraine landscape in North Germany. *Journal of Plant Nutrition and Soil Science*. 172(5): 688-695
- Gee, G.W., Ward, A.L., Zhang, Z.F., Campbell, G.S. and Mathison, J. 2002. The influence of hydraulic nonequilibrium on pressure plate data. *Vadose Zone Journal*. 1: 172-178
- Gerke, H.H., 2006. Preferential flow descriptions for structured soils. *Journal of Plant Nutrition and Soil Science*. 169(3): 382-400
- Gladnyeva, R. and Saifadeen, A. 2013. Effects of hysteresis and temporal variability in meteorological input data in modelling of solute transport in unsaturated soil using Hydrus-1D. *Journal of Water Management and Research*. 68: 285-293

- Goodale, C. L., Aber, J.D. and Ollinger, S.V. 1998. Mapping monthly precipitation, temperature and solar radiation for Ireland with polynomial regression and a digital elevation model. *Climate Research*. 10: 35-49
- Granlund, K., Räike, A., Ekholm, P., Rankinene, K., Rekolainen, S., 2005. Assessment of water protection targets for agricultural nutrient loading in Finland. *Journal of Hydrology*. 304: 251-260.
- Gumiere, S.J., Caron, J., Périard, Y. and Lafond, J. 2013. Effects of spatial variability of soil hydraulic properties on water dynamics. EGU General Assembly 2013. 7th-12th April, Vienna, Austria
- Helliwell, J. 2011. An assessment of nitrate leaching risk for different buffer strip establishments. *Bioscience Horizons*. 4(1): 79-89
- Hillel, D. 2004. Introduction to environmental soil physics. Elsevier Academic Press.
- Hooker, K.V. 2005. A field study of nitrate leaching from tillage land in south east Ireland. M.Sc. thesis. Trinity College, Dublin, Ireland
- Hooper, R.P. 2009. Towards and intellectual structure for hydrologic sciences. *Hydrological Processes*. 23: 353-355
- Humphreys, J., Casey, I.A., Darmody, P., O'Connell, K., Fenton, O. and Watson, C.J. 2008. Soil mineral N and nitrate-N losses to groundwater from four grassland-based systems of dairy production on a clay-loam soil under moist temperate climatic conditions. *Grass and Forage Science*. 63: 481-494

- Huebsch, M., Horan, B., Richards, K., Blum, P., Grant, J. and Fenton, O. 2013. Impact of agronomic practices of an intensive dairy farm on nitrogen concentrations in a karst aquifer in Ireland. *Agriculture, Ecosystems and Environment*. 179: 187-199
- Ibrahim, T.I., Fenton, O., Richards, K.G., Fealy, R.M. and Healy, M.G. 2013. Spatial and temporal variations in nutrient loads in overland flow and subsurface drainage from a marginal land site in South-East Ireland. *Biology and Environment: Proceedings of the Royal Irish Academy*. 113B(2): 1-18
- Jackson, B.M., Wheeler, H.S., Mathias, S.A., McIntyre, N. and Butler, A.P. 2006. A simple model of variable residence time flow and nutrient transport in the chalk. *Journal of Hydrology*. 330: 221-234
- Jacques, D., Šimůnek, J., Mallants, D. and van Genuchten, M. Th. 2008 Modelling coupled water flow, solute transport, and geochemical reactions affecting heavy metal migration in a podzol soil. *Geoderma*. 145(3-4): 449-461
- Jahangir, M.M.R., Johnston, P., Barrett, M., Khalil, M.I., Groffman, P.M., Boeckx, P., Fenton, O., Murphy, J. and Richards, K.G. 2013. Denitrification and indirect N₂O emissions in groundwater: Hydrologic and biogeochemical influences. *Journal of Contaminant Hydrology*. 152: 70-81
- Jarvis, N., Larsbo, M., Roulier, S., Lindahl, A. and Persson, L. 2007. The role of soil properties in regulating non-equilibrium macropore flow and solute transport in agricultural topsoils. *European Journal of Soil Science*. 58(1): 282-292
- Jordan, P., Menary, W., Daly, K., Kiely, G., Morgan, G., Byrne, P. and Moles, R. 2005. Patterns and processes of phosphorus transfer from Irish grassland soils to rivers – integration of laboratory and catchment studies. *Journal of Hydrology*. 304: 20-34

- Kartha, S.A. and Srivastava, R. 2008. Effect of immobile water content on contaminant transport in unsaturated zone. *Journal of Hydro-Environment Research*. 1: 206-215
- Keane, T. and Sheridan, T. 2004. Climate of Ireland. In: Climate, Weather and Irish Agriculture 2nd Edition. Eds: Keane, T. and Collins, J.F. Joint Working Group on Applied Agricultural Meteorology. pp392
- Keim, D.M., West, L.J. and Odling, N.E. 2012. Convergent flow in unsaturated fractured chalk. *Vadose Zone Journal*. 11(4)
- Khodaverdiloo, H., Homaei, M., van Genuchten, M. Th. and Dashtaki, S.G. 2011. Deriving and validating pedotransfer functions for some calcareous soils. *Journal of Hydrology*. 399: 93-99
- Konikow, L.F. 2011. The secret to successful solute-transport modelling. *Ground Water*. 49(2): 144-159
- Kosugi, K. 1996. Lognormal distribution model for unsaturated soil hydraulic properties. *Water Resources Research*. 32(9): 2697-2703
- Kramers, G., Holden, N.M., Brennan, F., Green, S. and Richards, K.G. 2012. Water content and soil type effects on accelerated leaching after slurry application. *Vadose Zone Journal*. 51(1)
- Kramers, G. 2009. Preferential flow in Irish grassland soils. Ph.D thesis. University College Dublin, Ireland.
- Kronvang, B., Andersen, H.E., Børgesen, C., Dalgaard, T., Larsen, S.E., Bøgestrand, J. and Blicher-Mathiasen, G., 2008. Effects of policy measures implemented in Denmark on nitrogen pollution of the aquatic environment. *Environmental Science and Policy*. 11, 144-152.

- Kurz, I., Coxon, C., Tunney, H. and Ryan, D. 2005a. Effects of grassland management practices and environmental conditions on nutrient concentrations in overland flow. *Journal of Hydrology*. 304: 35-50
- Kurz, I., Tunney, H. and Coxon, C. 2005b. The impact of agricultural management practices on nutrient losses to water: data on the effects of soil drainage characteristics. *Water science and technology*. 51(3-4): 73-81
- Leij, F.J. and van Genuchten, M. Th. 2011. Chapter 6. Solute Transport. In. Handbook of Soil Science. Ed. Sumner, M. CRC Press. 183-227
- Madsen, H.B., Jensen, C.R. and Boysen, T. 1986. A comparison of the thermocouple psychrometer and the pressure plate methods for determination of soil water characteristic curves. *Journal of Soil Science*. 37: 357-362
- Mapa, R.B., Green, R.E. and Santo, L. 1986. Temporal variability of soil hydraulic properties with wetting and drying subsequent to tillage. *Soil Science Society of America Journal*. 50(5): 1133-1138
- Meals, D.W., Dressing, S.A. and Davenport, T.E. 2010 Lag time in water quality response to best management practices: A review. *Journal of Environmental Quality*. 39: 85-96
- Mellander, P-E., Melland, A.R., Jordan, P., Wall, D.P., Murphy, P.N.C. and Shortle, G. 2012. Quantifying nutrient transfer pathways in agricultural catchments using high temporal resolution data. *Environmental Science and Policy*. 24: 44-57
- Mertens, J., Raes, D. and Feyen, J. 2002. Incorporating rainfall intensity into daily rainfall records for simulating runoff and infiltration in soil profiles. *Hydrological Processes*. 16: 731-739

- Missteart, B.D.R. 2000. Groundwater recharge assessment: A key component of river basin management. National Hydrology Seminar 2000. pp 51- 58
- Mohamed, J. and Ali, S. 2006. Development and comparative analysis of pedotransfer functions for predicting soil water characteristic content for Tunisian soils. Proceedings of the 7th Edition of TJASSST. 170-178
- Molénat, J. and Gascuel-Oudou, C. 2002. Modelling flow and nitrate transport in groundwater for the prediction of water travel times and of consequences of land use evolution on water quality. *Hydrological Processes*. 16: 479-492
- Monteith, J.L. 1981. Evaporation and surface temperature. *Quarterly Journal of the Royal Meteorological Society*. 107(451): 1-27
- Monteith, J.L. and Unsworth, M.H. 1990. Principles of Environmental Physics. 2nd edition. Ed. Edward Arnold, New York. pp 53-54
- Nielsen, D.R., van Genuchten, M. Th. and Biggar, J.W. 1986. Water flow and solute transport processes in the unsaturated zone. *Water Resources Research*. 22(9S): 89-108
- Padilla, I.Y., Yeh, T-C. J. and Conklin, M.H. 1999. The effect of water content on solute transport in unsaturated porous media. *Water Resources Research*. 35(11): 3303-3313
- Pang, L., Close, M.E., Watt, J.P.C. and Vincent, K.W. 2000. Simulation of picloram, atrazine, and simazine leaching through two New Zealand soils and into groundwater using HYDRUS-2D. *Journal of Contaminant Hydrology*. 44: 19-46
- Payne, F.C., Quinnan, J.A. and Potter, S.T. 2008. Remediation Hydraulics. CRC Press. Taylor & Francis Group. pp 432

- Peck, A.J., Luxmoore, R.J. and Stolzy, J.L. 1977. Effects of spatial variability of soil hydraulic properties in water budget modeling. *Water Resources Research*. 13(2): 348-354
- Pot, V., Šimůnek, J., Benoit, P., Coquet, Y., Yra, A. and Martínez-Cordón, M-J. 2005. Impact of rainfall intensity on the transport of two herbicides in undisturbed grassed filter strip soil cores. *Journal of Contaminant Hydrology*. 81: 63-88
- Premrov, A., Coxon, C.E., Hackett, R., Kirwan, L. and Richards, K.G. 2014. Effects of over-winter green cover on soil solution nitrate concentrations beneath tillage land. *Science of the Total Environment*. 470-471: 967-974
- Richards, K., Coxon, C.E. and Ryan, M. 2005. Unsaturated zone travel time to groundwater on a vulnerable site. *Irish Geography*. 38(1): 57-71
- Russo, D. 1991. Stochastic analysis of simulated vadose zone solute transport in a vertical cross section of heterogeneous soil in nonsteady water flow. *Water Resources Research*. 27(3): 267-283
- Ryan, M., Sherwood, M. and Fanning, A. 2001. Leaching of Nitrate (NO₃-N) from cropped and fallow soil – a lysimeter study with ambient and imposed rainfall regimes. *Irish Geography*. 34(1): 34-49
- SAS, 2003. SAS for Windows. Version 9.1. SAS Inst, Cary, NC.
- Saxton, K.E., Rawls, W.J., Romberger, J.S. and Papendick, R.I. 1986. Estimating generalised soil-water characteristics from texture. *Soil Science Society of America Journal*. 50(4): 1031-1036
- Schaap, M.G. and Leij, F.J. 1998. Database-related accuracy and uncertainty of pedotransfer functions. *Soil Science*. 163(10): 765-779

- Schaap, M.G., Leij, F.J. and van Genuchten, M.Th. 2001. ROSETTA: A computer program for estimating soil hydraulic parameters with hierarchical pedotransfer functions. *Journal of Hydrology*. 251: 163-176
- Scheure, S. and Naus, J. 2010. 10 Years of the Water Framework Directive: A toothless tiger? A snapshot assessment of EU environmental ambitions. Ed. Hontelez, J. European Environmental Bureau.
- Schulte, R.P.O., Diamond, J., Finkele, K., Holden, N.M. and Brereton, A.J. 2005. Predicting the soil moisture conditions of Irish grasslands. *Irish Journal of Agriculture and Food Research*. 44: 95-110
- Schulte, R.P.O., Richards, K., Daly, K., Kurz, I., McDonald, E.J. and Holden, N.M. 2006. Agriculture, meteorology and water quality in Ireland: A regional evaluation of pressures and pathways of nutrient loss to water. *Biology and Environment: Proceedings of the Royal Irish Academy*. 106B(2): 117-133
- Selbie, D. 2013. The fate of nitrogen in an animal urine patch as affected by urine nitrogen loading rate and the nitrification inhibitor dicyandiamide. Ph.D thesis. Lincoln University, Canterbury, New Zealand.
- Shipitalo, M.J., Dick, W.A. and Edwards, W.M. 2000. Conservation tillage and macropore factors that affect water movement and the fate of chemicals. *Soil and Tillage Research*. 53: 167-183
- Šimůnek, J., Suarez, D.L. and Šejna, M. 1996. The UNSATCHEM software package for simulating one-dimensional variably saturated water flow, heat transport, carbon dioxide transport, and multi-component solute transport with major ion equilibrium and kinetic

chemistry. Version 2.0. Research Report No. 141. U.S. Salinity Laboratory, USDA, ARS, Riverside, California pp186

Šimůnek, J., Šejna, M., Saito, H., Sakai, M and van Genuchten, M. Th. 2013. The HYDRUS 1D software package for simulating the movement of water, heat and multiple solutes in variably saturated media. Version 4.16 HYDRUS software series 3, Department of Environmental Science, University of California Riverside, Riverside, California, USA. pp 340

Šimůnek, J. 2014. 31/1/2014 PC-Progress discussion forum. <http://www.pc-progress.com/forum/viewtopic.php?f=4&t=2391&sid=22af64777a79eab232fbf7470f204bb3>

Smith, M., Allen, R.G., Monteith, J.L., Perrier, A., Pereira, L. and Segesen, A. 1991. Report on the expert consultation on procedures for revision of FAO guidelines for prediction of crop water requirements. FAO, Rome.

Sophocleous M. 2004 Groundwater Recharge. in *Groundwater*, Eds. Luis Silveira, Stefan Wohnlich, and Eduardo J. Usunoff, in *Encyclopedia of Life Support Systems (EOLSS)*, Developed under the Auspices of the UNESCO, Eolss Publishers, Oxford ,UK, [http://www.eolss.net]

Sousa, M.R., Jones, J.P., Frind, E.O. and Rudolph, D.L. 2013. A simple method to assess unsaturated zone time lag in the travel time from ground surface to receptor. *Journal of Contaminant Hydrology*. 144: 138-151

Stark, C.H. and Richards, K.G. 2008. The continuing challenge of nitrogen loss to the environment: Environmental consequences and mitigation strategies. *Dynamic Soil, Dynamic Plant*. 2(1): 1-12

- Sweeney, J.C. 1985. The changing synoptic origins of Irish precipitation. *Transactions of the Institute of British Geographers*. 10(4): 467-480
- Tedd, K.M., Coxon, C.E., Misstear, B.D.R., Daly, D., Craig, M., Mannix, A. and Hunter Williams, N.H. 2014. An integrated pressure and pathway approach to the spatial analysis of groundwater nitrate: A case study from the southeast of Ireland. *Science of the Total Environment*. 476-477. p460-476
- Torres, R., Dietrich, W.E., Montgomery, D.R., Anderson, S.P. and Loague, K. 1998. Unsaturated zone processes and the hydrologic response of a steep, unchanneled catchment. *Water Resources Research*. 34(8): 1865-1879
- USDA. 1999. Soil Quality Test Kit Guide. Ed. United States Department of Agriculture. Washington D.C.
- van Genuchten, M. Th. 1980. A closed-form equation for predicting the hydraulic conductivity of unsaturated soils. *Soil Science Society of America Journal*, 44: 892-898.
- van Genuchten, M.Th., Leij, F.J. and Yates, S.R. 1991. The RETC code for quantifying the hydraulic functions of unsaturated soils. Version 1.0 EPA Report 600/2-91/065, U.S. Salinity Laboratory, USDA, ARS, Riverside, California
- van Grinsven, H.J.M., Holland, M., Jacobsen, B.H., Klimont, Z., Sutton, M.A. and Willems, J. 2013. Costs and benefits of nitrogen for Europe and implications for mitigation. *Environmental Science and Technology*. 47(8): 3571-3579
- van Grinsven H.J.M., ten Berge H.F.M., Dalgaard T., Fraters B., Durand P., Hart A., Hofman G., Jacobsen B.H., Lalor S.T.J., Lesschen J.P., Osterburg B., Richards K.G., Techen A.-K., Vertès F., Webb J., Willems W.J. 2012. Management, regulation and environmental impacts

of nitrogen fertilization in northwestern Europe under the Nitrates Directive; a benchmark study, *Biogeosciences*. Special issue: Nitrogen and global change 9, 5143–5160.

Vereecken, H., Huisman, J.A., Bogaen, H., Vanderborght, J., Vrugt, J.A. and Hopmans, J.W. 2008. On the value of soil moisture measurements in vadose zone hydrology: A review. *Water Resources Research*. 44(4):

Vereecken, H., Weynants, M., Javaux, M., Pachepsky, Y., Schaap, M.G. and van Genuchten, M. Th. 2010. Using pedotransfer functions to estimate the van Genuchten-Mualem soil hydraulic properties: A review. *Vadose Zone Journal*. 9: 795-820

Wagner, T., Boyle, D.P., Lees, M.J., Wheeler, H.S., Gupta, H.V. and Sorooshian, S. 2001. A framework of development and application of hydrological models. *Hydrology and Earth System Sciences*. 5(1): 13-26

Wang, P., Quinlan, P. and Tartakovsky, D.M. 2009. Effects of spatio-temporal variability of precipitation on contaminant migration in the vadose zone. *Geophysical Research Letters*. 36

Wang, L., Stuart, M.E., Bloomfield, J.P., Butcher, A.S., Gooddy, D.C., McKenzie, A.A., Lewis, M.A. and Williams, A.T. 2012. Prediction of the arrival of peak nitrate concentrations at the water table at the regional scale in Great Britain. *Hydrological Processes*. 26(2): 226-239

Wösten, J.H.M., Finke, P.A. and Jansen, M.J.W. 1995. Comparison of class and continuous pedotransfer functions to generate soil hydraulic characteristics. *Geoderma*. 66(3-4): 227-237

Yang, X. and You, X. 2013. Estimating parameters of van Genuchten model for soil water retention curve by intelligent algorithms. *Applied Mathematics and Information Sciences*. 7(5): 1977-1983

Captions for Figures

Fig. 1

Conceptual unsaturated numerical model diagram indicating input parameters, boundary conditions, horizon characteristics and model outputs.

Fig. 2

Low to high complexity soil characteristic data employed in Hydrus 1D

Fig. 3

Standard deviation in IBT, Peak, COM and Exit for each of the 9 NSS profiles, depending on data complexity

Fig. 4

Top to bottom: A) IBT, B) Peak, C) COM and D) Exit for the NSS profiles using simple to complex input data

Fig. 5

A) Position of NSS profiles No. 1-9 relative to a surface receptor and t_r ranges

B) Position of various soil types relative to a surface receptor. Soils simulated in this paper (Podzol to Surface water gleys) highlighted

Captions for Tables

Table 1

Summary table of NSS (Waterford) soils

Table 2

Daily vs. hourly estimates of IBT, Peak, COM and Exit for the 12 textural classes during a wet and a dry year respectively

Table 3

Physical properties of Profile No. 9 (Ballymacart)

Table 4

Hydraulic properties of Profile No. 9 (Ballymacart) determined from the textural menu, ROSETTA and by fitting of the full and low pressure SWCC

Table 5

Importance of t_u relative to total time lag (t_T) in % (t_r) across data complexity range, when the saturated time lag (t_s) varies (0.5, 5 and 10 years)

Table 6

Results of Kramers *et al.* (2012) lysimeter study

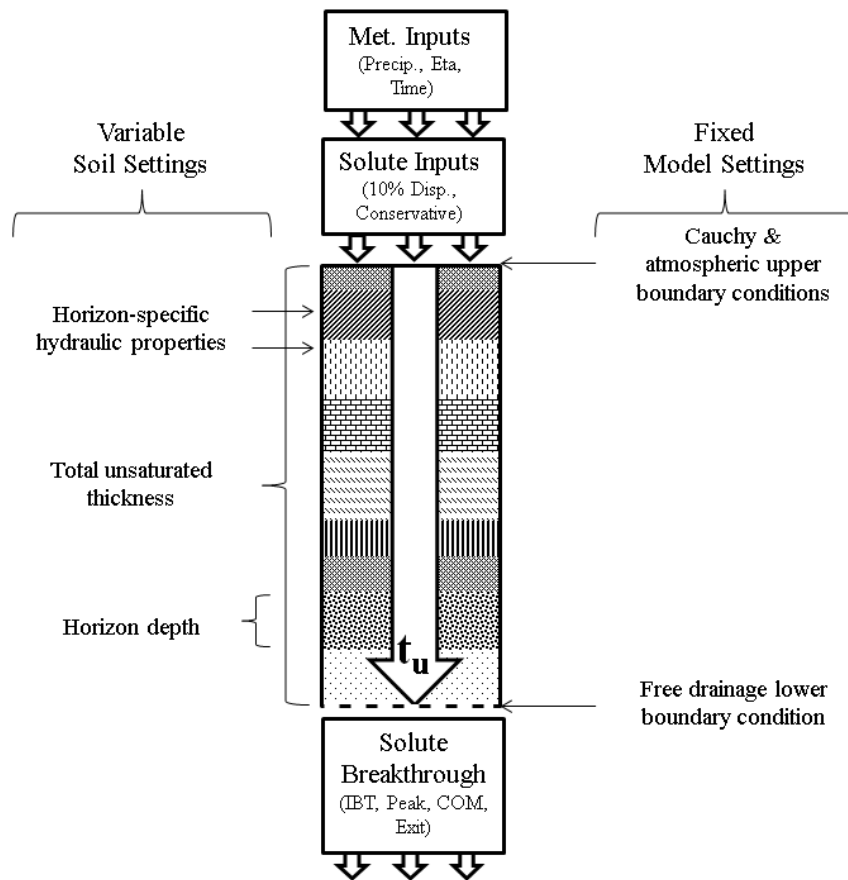


Fig. 1

Conceptual unsaturated numerical model diagram indicating input parameters, boundary conditions, horizon characteristics and model outputs.

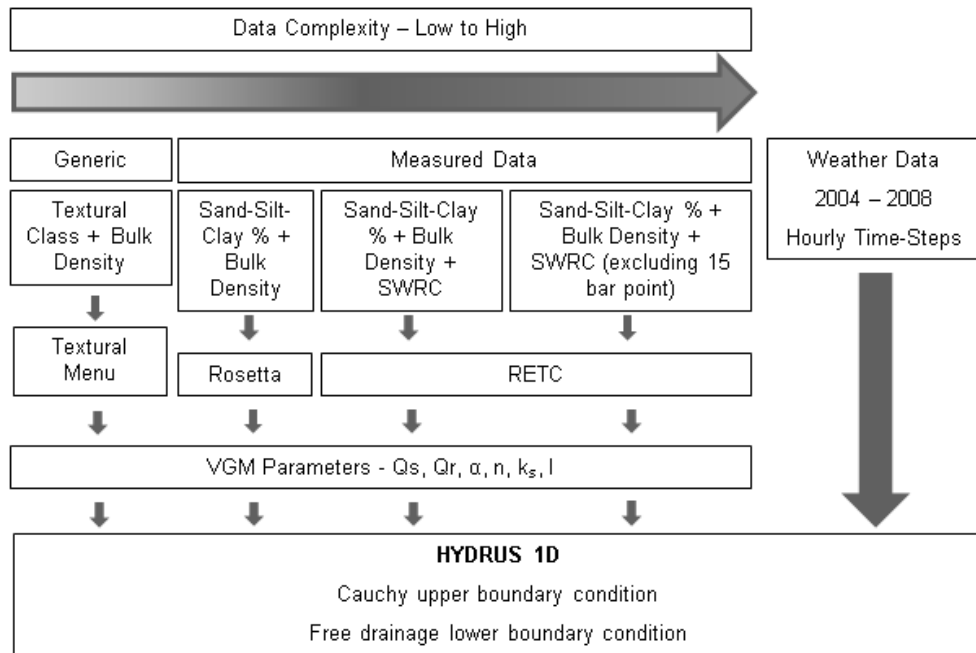


Fig. 2

Low to high complexity soil characteristic data employed in Hydrus 1D

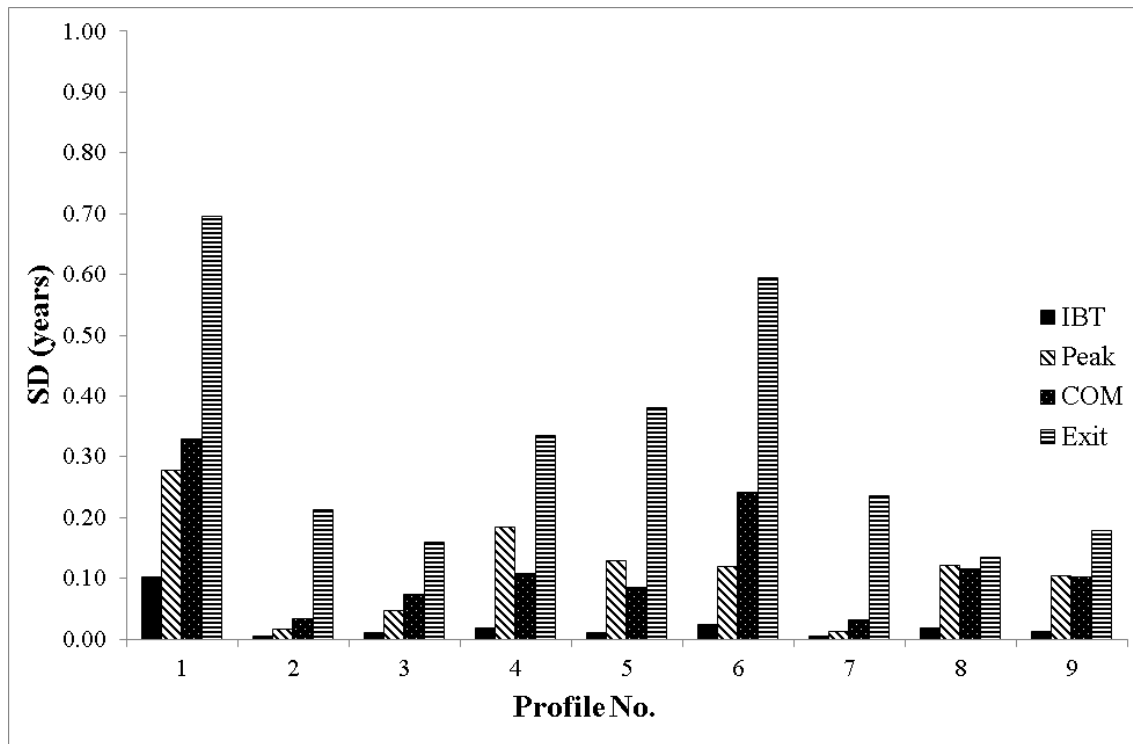
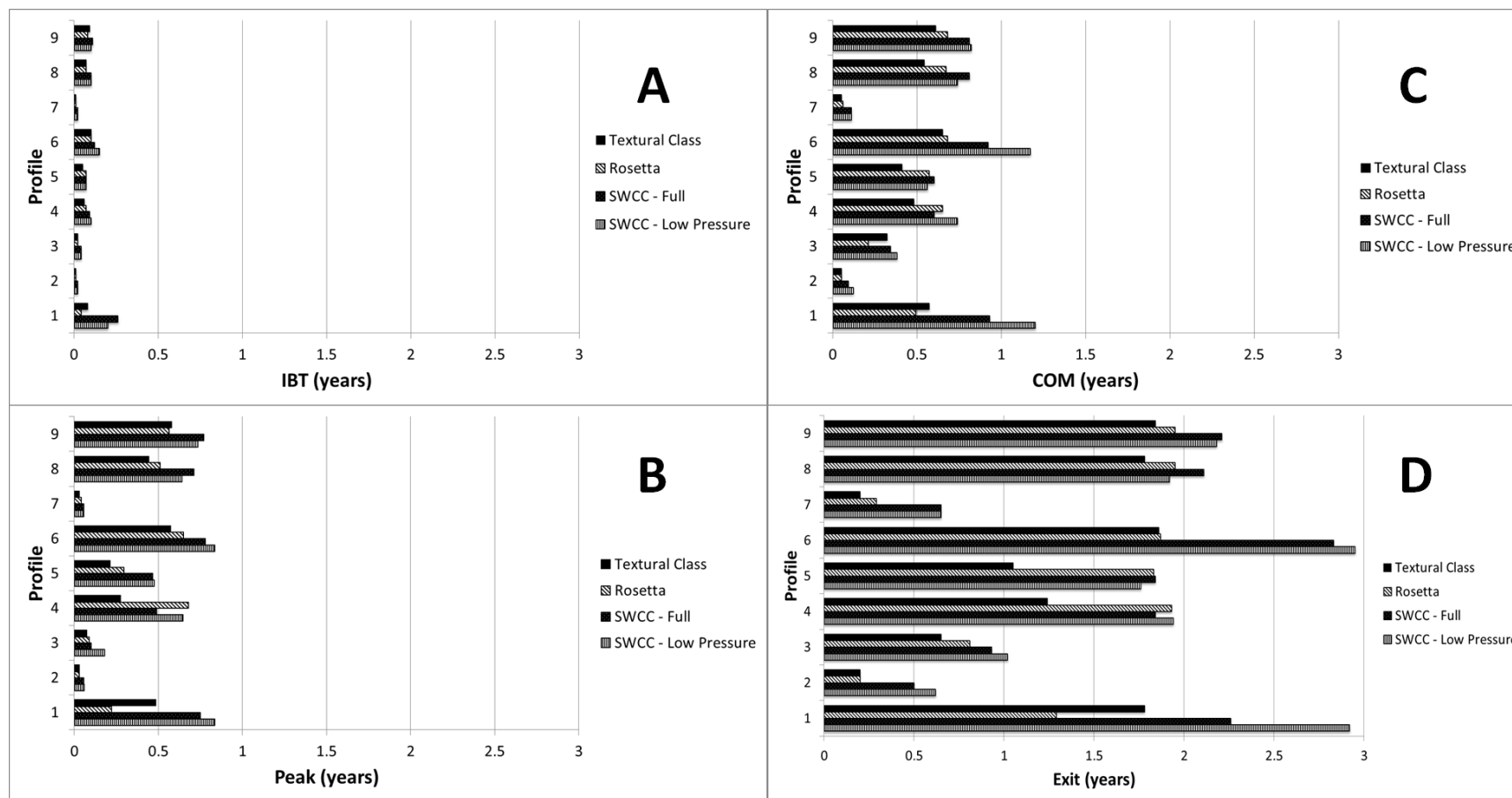


Fig. 3

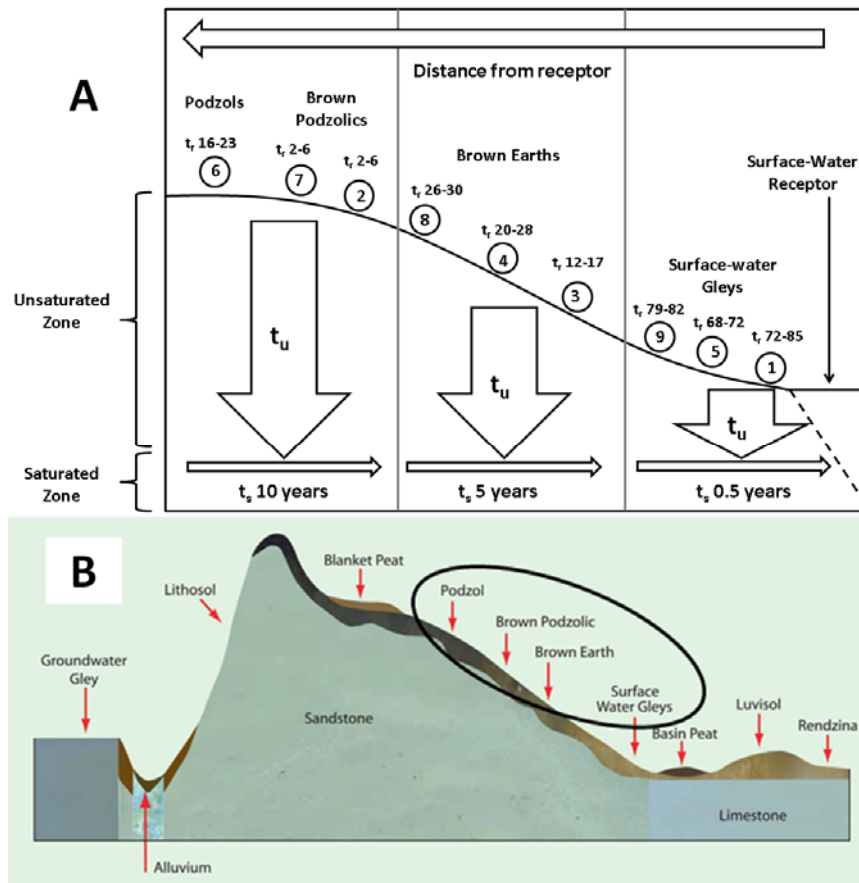
Standard deviation (SD) in IBT, Peak, COM and Exit for each of the 9 NSS profiles, depending on data complexity



1

2 **Fig. 4**

3 Top to bottom: A) IBT, B) Peak, C) COM and D) Exit for the NSS profiles using simple to complex input data.



5

6 **Fig. 5**7 A) Position of NSS profiles No. 1-9 relative to a surface receptor and t_r ranges

8 B) Position of various soil types relative to a surface receptor. Soils simulated in this paper (Podzol to

9 Surface water gleys) highlighted. Adapted from Anon (2013)

10 **Table 1**

11 Summary of NSS (Waterford) soils

Profile No.	Profile Name	Soil Great Group (ISIS)	World Reference Base Classification	No. of Layers	Depth	k _s range	Altitude	Saturated t _u **
					m	cm hr ⁻¹	m asl*	Years
Non-converging	Lickey	Humic Surface Water Gley	Haplic Gleysol	6	1.00	0.15-7.90	145	0.35
Non-converging	Dungarvan	Typical Luvisol	Haplic Luvisol	9	1.60	0.11-1.02	30	0.39
Non-converging	Clashmore	Typical Brown Earth	Haplic Phaeozem	8	0.90	0.13-0.92	80	0.29
9	Tramore	Typical Surface Water Gley	Stagnic Cambisol	5	1.20	0.22-0.45	55	0.88
8	Suir	Typical Drained Alluvial Soil	Fluvic Cambisol	7	0.95	1.08-3.81	20	0.55
7	Slievecoiltia	Humic Brown Podzolics	Leptic Cambisol	2	0.20	1.75-3.67	160	0.17
6	Portlaw	Humic Podzol	Albic Folic Podzol	4	1.50	0.23-3.46	65	1.12
5	Newport	Typical Surface Water Gley	Gleyic Phaeozem	6	1.00	0.28-6.62	100	0.60
4	Kill 2	Typical Brown Earth	Haplic Lixisol	7	1.00	0.20-2.27	65	0.75
3	Kill	Typical Brown Earth	Haplic Lixisol	3	0.40	0.86-3.40	90	0.34
2	Callaghane	Typical Brown Podzolics	Haplic Phaezoem	2	0.20	4.01-5.46	20	0.16
1	Ballymacart	Humic Groundwater Gleys	Haplic Gleysol	9	1.25	0.40-8.13	90	0.77

12 *metres above sea level: **Fenton *et al.* (2012)

13 **Table 2**

14 Daily vs. hourly estimates of IBT, Peak, COM and Exit for the 12 textural classes during a wet and a dry year respectively

Textural Class	k_s cm hr ⁻¹	IBT				Peak				COM				Exit			
		Wet Year (2004)		Dry Year (2010)		Wet Year (2004)		Dry Year (2010)		Wet Year (2004)		Dry Year (2010)		Wet Year (2004)		Dry Year (2010)	
		Daily	Hourly	Daily	Hourly	Daily	Hourly	Daily	Hourly	Daily	Hourly	Daily	Hourly	Daily	Hourly	Daily	Hourly
Sand	29.70	0.02	0.02	0.03	0.03	0.03	0.03	0.04	0.03	0.05	0.03	0.07	0.05	0.19	0.09	0.39	0.23
Loamy Sand	14.59	0.02	0.02	0.03	0.03	0.04	0.03	0.04	0.04	0.07	0.04	0.12	0.06	0.24	0.18	0.53	0.25
Sandy Loam	4.42	0.03	0.02	0.03	0.03	0.07	0.05	0.05	0.05	0.12	0.06	0.24	0.11	0.62	0.23	0.83	0.44
Sandy Clay Loam	1.31	0.03	0.02	0.03	0.03	0.10	0.03	0.09	0.07	0.24	0.09	0.37	0.17	0.81	0.31	No Exit (>1)	0.53
Loam	1.04	0.03	0.03	0.04	0.03	0.10	0.07	0.10	0.08	0.26	0.10	0.41	0.18	0.81	0.39	No Exit (>1)	0.55
Silt Loam	0.45	0.04	*	0.04	0.03	0.13	*	0.09	0.08	0.38	*	0.50	0.22	1.00	*	No Exit (>1)	0.66
Clay Loam	0.26	0.03	*	0.03	*	0.12	*	0.35	*	0.37	*	0.49	*	0.98	*	No Exit (>1)	*
Silt	0.25	0.04	*	0.04	*	0.15	*	0.41	*	0.39	*	0.52	*	1.00	*	No Exit (>1)	*
Clay	0.20	*	*	0.03	*	*	*	0.25	*	*	*	0.49	*	*	*	No Exit (>1)	*
Sandy Clay	0.12	*	*	*	*	*	*	*	*	*	*	*	*	*	*	*	*
Silty Clay Loam	0.07	*	*	*	*	*	*	*	*	*	*	*	*	*	*	*	*
Silty Clay	0.02	*	*	*	*	*	*	*	*	*	*	*	*	*	*	*	*

15 *Failed to converge

16

17 **Table 3**

18 Physical properties of Profile No. 1 (Ballymacart)

Horizon	Textural Class	Depth	Sand	Silt	Clay	B _D	P _D	n _e	Retained water % volume					
		Cm	%	%	%	g cm ⁻³	g cm ⁻³	%	0 bar	-0.002 bar	-0.059 bar	-0.137 bar	-1 bar	-15 bar
A1	Loam	0-10	47	47	6	1.00	2.26	34	59.5	52.8	47.7	45.4	40.1	21.3
A2	Loam	10-20	46	46	8	1.08	2.17	31	60.0	56.5	52.4	50.1	45.5	18.9
A3.1	Loam	20-30	47	47	6	1.22	2.25	26	50.7	48.7	46.1	45.1	40.6	19.4
A3.2	Loam	30-40	47	47	6	1.23	2.25	27	49.9	47.8	45.8	44.8	40.5	18.8
Eg1	Sandy Loam	40-50	67	23	10	1.69	2.56	23	34.2	32.4	30.5	29.5	25.0	11.1
Eg2	Sandy Loam	50-60	67	23	10	1.53	2.56	26	39.8	36.5	33.7	32.4	28.3	14.4
Bg1	Loam (silty)	60-80	59	32	9	1.51	2.65	33	43.3	37.5	34.1	32.6	25.3	10.3
Bg2	Loam (silty)	80-100	59	32	9	1.63	2.65	29	38.9	35.4	33.0	31.4	27.1	9.5
Cg1	Clay Loam	100-125	45	32	23	1.50	2.64	17	49.1	43.6	41.7	40.8	37.6	25.8

19

20

21

22

23

24 **Table 4**

25 Hydraulic properties of Profile No. 1 (Ballymacart) determined from the textural menu, ROSETTA and by fitting of the full and low pressure SWCC

Horizon	θ_r	θ_s	α	n	k_s (cm hr ⁻¹)	R ²	θ_r	θ_s	α	n	k_s (cm hr ⁻¹)	R ²
	Textural Menu						ROSETTA					
A1	0.078	0.430	0.036	1.56	1.04	n/a	0.043	0.452	0.007	1.58	8.13	n/a
A2	0.078	0.430	0.036	1.56	1.04	n/a	0.045	0.436	0.007	1.58	5.21	n/a
A3.1	0.078	0.430	0.036	1.56	1.04	n/a	0.038	0.396	0.009	1.54	3.35	n/a
A3.2	0.078	0.430	0.036	1.56	1.04	n/a	0.038	0.394	0.009	1.54	3.22	n/a
Eg1	0.065	0.410	0.075	1.89	4.42	n/a	0.038	0.333	0.043	1.36	0.88	n/a
Eg2	0.065	0.410	0.075	1.89	4.42	n/a	0.042	0.374	0.033	1.45	1.67	n/a
Bg1	0.067	0.450	0.020	1.41	0.45	n/a	0.038	0.364	0.026	1.42	1.40	n/a
Bg2	0.067	0.450	0.020	1.41	0.45	n/a	0.035	0.337	0.033	1.36	0.91	n/a
Cg1	0.095	0.410	0.019	1.31	0.26	n/a	0.064	0.393	0.014	1.43	0.40	n/a
	Full SWCC						Low pressure data - no -15 Bar point					
A1	0.043	0.560	0.023	1.14	8.13	0.93	0.043	0.595	5.621	1.04	8.13	0.98
A2	0.045	0.554	0.001	1.36	5.21	0.96	0.045	0.598	1.070	1.04	5.21	0.98
A3.1	0.038	0.481	0.001	1.32	3.35	0.98	0.038	0.499	0.066	1.05	3.35	0.97
A3.2	0.038	0.474	0.001	1.34	3.22	0.98	0.038	0.490	0.046	1.05	3.22	0.96
Eg1	0.038	0.322	0.002	1.31	0.88	0.98	0.038	0.334	0.032	1.08	0.88	0.97
Eg2	0.042	0.372	0.006	1.45	1.67	0.95	0.042	0.397	2.024	1.04	1.67	0.96
Bg1	0.038	0.399	0.012	1.22	1.40	0.95	0.038	0.431	2.842	1.10	1.40	0.91
Bg2	0.035	0.352	0.002	1.39	0.91	0.95	0.035	0.387	1.982	1.04	0.91	0.95
Cg1	0.064	0.460	0.016	1.43	0.40	0.91	0.064	0.491	66.423	1.02	0.40	0.97

26 **Table 5**

27 Importance of t_u relative to total time lag (t_T) in % (t_r) across data complexity range, when the saturated time lag (t_s) varies (0.5, 5 and 10 years).

Profile No.	t_s (years)											
	0.5 (near receptor)				5 (mid slope)				10 (hillslope)			
	Textural Menu	Rosetta	Low Pressure	Full	Textural Menu	Rosetta	Full	Low Pressure	Textural Menu	Rosetta	Low Pressure	Full
9	79	80	81	82	27	28	31	30	16	16	18	18
8	78	80	79	81	26	28	30	28	15	16	16	17
7	29	37	57	57	4	5	12	12	2	3	6	6
6	79	79	86	85	27	27	36	37	16	16	23	22
5	68	79	78	79	17	27	27	26	10	15	15	16
4	71	79	80	79	20	28	27	28	11	16	16	16
3	57	62	67	65	12	14	16	17	6	7	9	9
2	29	29	55	50	4	4	9	11	2	2	6	5
1	78	72	85	82	26	21	31	37	15	11	23	18

36 **Table 6**

37 Summary results of Kramers *et al.* (2012) lysimeter study

Profile Name	Description	World Reference Base Classification	Drainage class	IBT	Peak	COM	Exit	Tracer Recovery
				years				%
Oak Park	Sandy loam (0.45 m) over gravel	Haplic Cambisol	Freely drained	0.08	0.37	0.38	0.99	86
Clonroche	Moderately structured loam	Haplic Cambisol	Relatively well drained	0.05	0.56	0.61	>1.14	70
Elton	Structured loam/silt loam	Cutanic Luvisol	Moderately well drained	0.04	0.84	0.67	1.07	54
Rathangan	Loam to clay loam	Luvic Stagnosol	Poorly drained, some gleying	0.01	0.02	0.18	1.10	33

38

39